

# WISY Vortex Underground Filter

## Underground installation for multiple rainwater downpipes

### OVERVIEW

The Vortex Underground Filter is designed to handle water from a number of rainwater downpipes. Installed underground it becomes an integral part of the rainwater drainage system, meeting all the requirements of the German DIN (Land and Drainage) 1986. The standard size is suitable for roof areas of up to 500 m<sup>2</sup>, the small size for roof areas up to 200m<sup>2</sup>.

The self-cleaning filter captures over 90% of the rainwater, filtering it and diverting it into a storage tank. The remaining water carries leaves and any other debris from the roof and gutter straight into the drain or soak away. The filter can be easily removed for maintenance purposes.

### ADVANTAGES

- Captures over 90% of the rainwater
- Fine (0.28 mm) self-cleaning mesh filter
- Compatible with 110 mm and 160 mm drainage
- Low maintenance
- Optional leaf filter available if desired

### GENERAL

The simple but high precision WISY filter uses surface tension in conjunction with a fine stainless steel filter mesh to exclude most particles. The filtered rainwater is therefore very low in organic matter and can be stored for many months, if necessary, with no deterioration in water quality.

The Vortex Underground Filter is installed underground to handle the water from a number of downpipes, becoming an integral part of the rainwater drainage system. It meets all the requirements of DIN 1986.

The Vortex comes with a 500 mm extension piece to suit invert levels found on most site conditions. Extra extension pieces can be ordered separately if necessary. The filter housing and extension piece are made from environmentally compatible polypropylene

and can take the weight of a 12 tonne truck (i.e a direct loading of 3 tonnes).

Since their invention in Germany in 1989, WISY filters have been successfully installed in over 100,000 homes. A rainwater harvesting system is increasingly becoming a standard feature in many new homes on the continent.

The standard Vortex has 3 separate sections. The rainwater inlet, filtered water outlet and drain outlet can be positioned at any angle to each other thus allowing total flexibility of positioning of drainage runs.

The rainwater inlet on the small Vortex can be changed to any position. The filtered water outlet and drain outlet are fixed at 180 degrees to each other.



## PRODUCT DATA

### Standard Vortex

Diameter	315 mm OD
Height	779 mm
Weight	11.40 kg
Filter capacity	2.0-2.5 litres/sec
Rainwater inlet pipe dia.	160 mm (DN 150)
Filtered water outlet pipe dia.	110 mm (DN 100)
Drain outlet	160 mm (DN 150)

with adjustable reducing piece for nominal sizes 100mm-125mm

### Small Vortex

Diameter	315 mm OD
Height	530 mm
Weight	9.45 kg
Filter capacity	max 1.5 litres/sec
Rainwater inlet pipe dia.	110 mm (DN 100)
Filtered water outlet pipe dia.	110 mm (DN 100)
Drain outlet	110 mm (DN 100)

The Vortex is supplied with a 500mm extension piece as standard. Extra extension pieces can be ordered

WISY filters meet all the requirements of the German DIN 1986 - Building and Land Drainage

### Installation requirements in existing pipework

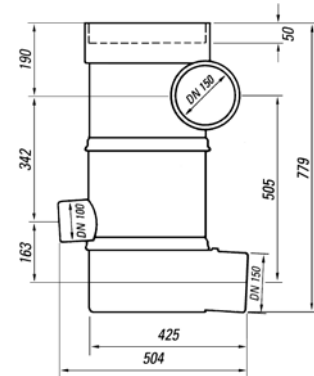
#### Standard Vortex

505 mm minimum required between rainwater inlet and drain outlet  
340 mm minimum required between rainwater inlet and filtered water outlet

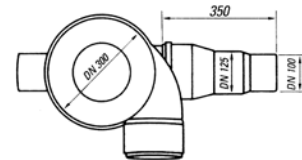
#### Small Vortex

270 mm minimum required between rainwater inlet and drain outlet  
210 mm minimum required between rainwater inlet and filtered water outlet

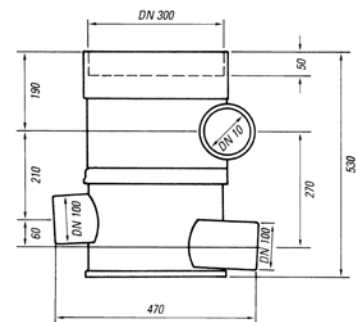
Standard size



Waste water outlet



Small size



Extension piece

