

# MultiPlex-Top®

## Bitumen-free sarking boards for walls and roofs

### GENERAL

MultiPlex-Top boards are 22mm thick **tongue and grooved** rigid insulation boards. They can be used externally in place of a **breather membrane** - not only do they protect the building envelope from wind and rain but they also provide an additional layer of insulation which **prevents cold-bridging** across the timbers. In addition, a factory applied hydrophobic coating enables them to be used as a **temporary wall/roof covering** for up to one month.

MultiPlex boards are **fully biodegradable**.

### Applications

- Insulating breather membrane for roofs and walls
- Insulating internal lining board (can be plastered)



### ADVANTAGES

#### Composition & Manufacture

- Manufactured from renewable resources
- Manufactured from by-products
- Bitumen-free
- CO<sub>2</sub> zero-rated
- Timber fuelled embodied energy
- Actively recycled

#### Installation & Disposal

- No known health risks for installers
- Easily cut to shape with handsaw
- Durable / Low maintenance
- Reusable / Recyclable
- Compostable

#### Performance

- Wind and rainproof from 20 degree pitch upwards
- Acts as temporary roof covering (max. 4 weeks)
- Eliminates thermal cold bridging through timbers
- Vapour permeable ( $S_D$ -value = 0.11 m)
- Enhances thermal performance in Winter
- Enhances thermal performance in Summer
- Good acoustic performance
- Hygroscopic (absorbs & releases moisture)
- Vermin and fungus resistant
- Electrically neutral
- Non-radioactive
- Free from toxins and allergens
- Dimensionally stable (low thermal movement)
- Helps regulate indoor climate
- Low toxic fumes if burn

### PRODUCT DATA

#### Composition

Raw material	spruce / pine chippings
Hydrating agent	natural tree resin
Fire protecting agent	none
Hydrophobic coating	tree resin / wax emulsion

#### Dimensions and packaging

Board thickness	<b>22 mm</b>
Board size	2500 x 750mm
Coverage per board	1.81 m <sup>2</sup>
Weight per board	10.7 kg
Boards per pallet	45
Coverage per pallet	81.4 m <sup>2</sup>
Weight per pallet	500 kg

#### Technical data

Density, $\rho$	260 kg/m <sup>3</sup>
Thermal conductivity, $\lambda_R$	<b>0.050 W/m.K</b>
Thermal resistance, R	0.44 / 0.72 m <sup>2</sup> .K/W
Diffusion resistance, $\mu$	5
Compressive strength, $\sigma_m$	$\geq 150$ kN/m <sup>2</sup>
Bending strength, $\sigma$	$\geq 1.5$ N/mm <sup>2</sup>
Water absorption	$\leq 1.0$ kg/m <sup>2</sup>
Fire rating	Class B2

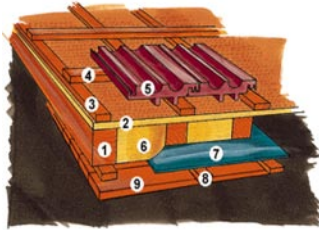
#### Standards

- DIN 68775-1- WF-P-Wh-050-H10-B2
- Certified by Institute of German Master Roofers

## TYPICAL APPLICATIONS

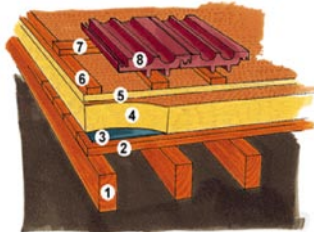
### ... roof sarking on timber rafters (warm roof)

1. Rafters
2. **MultiPlex**
3. Counterbattens
4. Battens
5. Roof cladding
6. Insulation
7. **pro clima DB+**
- 8.
- 9.



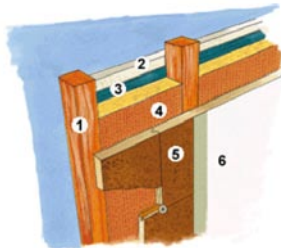
### ... roof sarking on external roof Insulation

1. Rafters
2. Boarding
3. **pro clima DA**
4. **ThermoSafe**
5. **MultiPlex**
6. C. Battens
7. Battens
8. Roof covering



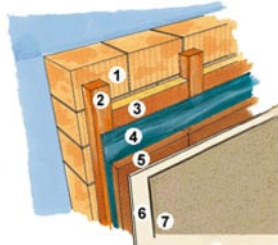
### ... external sheathing on timber-frame or Steko

1. Studwork
2. Internal lining
3. **pro clima DB+**
4. Insulation<sup>1</sup>
5. **MultiPlex**
6. External cladding



### ... internal lining on brickwork or ThermoCellit

1. Existing wall
2. Battens
3. Insulation<sup>1</sup>
4. **pro clima DB+**
5. **MultiPlex**
6. Primer
7. Wall finish



<sup>1</sup> ThermoSafe 040 / Flex 040 / Vital 040

## DESIGN CONSIDERATIONS

### Performance

Suitable for 20° roof pitches and above.  
Suitable for rafter / support centres up to 850mm.

### Racking strength

MultiPlex boards do not provide racking strength. Racking strength, if required, can be achieved with metal strappings or by using a suitable internal lining board. Please consult your structural engineer.

## STORAGE & HANDLING

### Storage

MultiPlex boards must be protected from rain and rising damp at all times prior to installation. Protect edges of boards from being damaged.

### Cutting

Cut boards using a fine-toothed circular saw with guide and integral dust extractor.

## INSTALLATION

### External applications

Install boards with writing facing outwards and with rising tongue. Fully engage board joints (tongue and groove). Butt joints should be primed and taped. Boards are generally fixed with clout nails at 330mm centres or less. It is recommended that boards are fixed by nailing through the counter batten, thereby avoiding any risk of nail or screw heads penetrating the watertight layer. See also *Installation Guidelines*.

### Associated products

- pro clima BUDAX Tapes (taping of joints)

## SUPPLY

### Availability

**MultiPlex wood-fibre insulation boards**, ThermoSafe 040, Flex 040, Vital 040 and pro clima products are available in the UK through Construction Resources.

## SERVICES

### Sales and Technical

Please contact Construction Resources for further technical information and/or cost quotations.